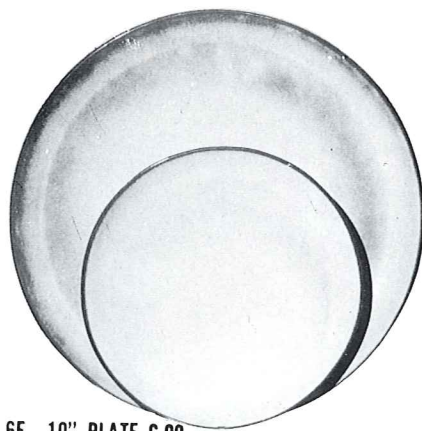


4K—BUTTER DISH
7.00



6F—10" PLATE 6.00
6G—7" PLATE 3.50



*6U—18 OZ. BAKER FOR TWO
A COVERED CANDY DISH 7.00



*6B—SUGAR WITH LID
5.50

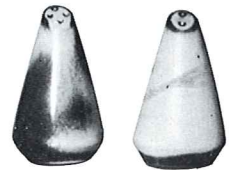
*6AB—CREAM & SUGAR SET
9.00



*6A—9 OZ. CREAMER
3.50



**6C—CUP 3.50
6E—5" WELLED SAUCER 3.00



*6H—SALT & PEPPER
5.00



*6VS—1½ QT. BAKER 10.00
*6VS/W BAKER & WARMER SET 17.50



*5LC—6 OZ. JUICE 3.50



*5L—12 OZ.
TUMBLER
4.00



*81—1 QT. PITCHER 7.00



*249 TACO HOLDER
BOXED 2 PER BOX 10.00
Not Available in Flame



*6V—2½ QT. BAKER 14.50
*6V/W BAKER & WARMER SET 22.00



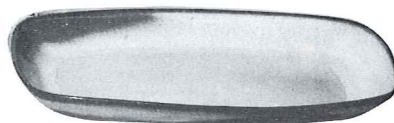
*6T—6 CUP TEAPOT 10.00



*80—2 QT. PITCHER 10.00



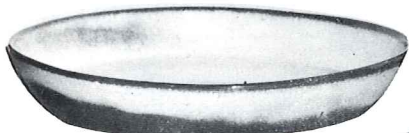
*6J—2 CUP TEAPOT
7.00



*5QS—13" STEAK PLATE (SHALLOW PLATTER) 6.00

*6P—11" STEAK PLATE 5.00

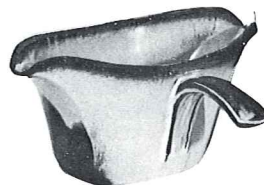
*5PS—9" TRAY 4.00



*91—10" BAKING DISH
5.00



*X0—3 OZ.
SINGLE SERVING
BOWL 1.50



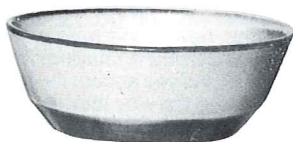
*6S—2 SPOUT GRAVY
7.00



*242
3.00 CORN DISH



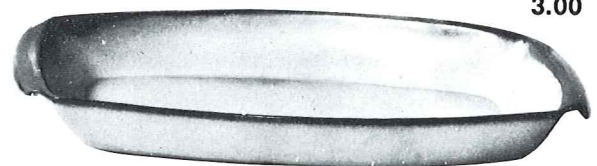
*243—6½" CRESCENT SALAD
3.00



*6N—1 QT. BOWL
5.00

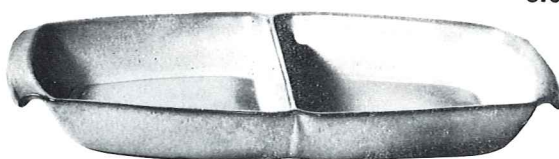


*6X—14 OZ. CHILI SOUP 3.50
*6XS—10 OZ. FRUIT 3.00



17.50
*5P—17" DEEP PLATTER

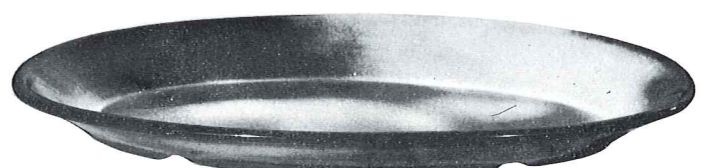
8.00
*5Q—13" DEEP PLATTER



*5QD—13" DIVIDED BOWL
8.00



*BP—6 OZ. BEAN POT
OR CUSTARD
3.00



*TP—17" OVAL PLATTER
17.50

This page available in colors shown on opposite page—except where noted—

* Available in Standard Frankoma Colors PLUS Peach—ADD 50% for Flame

** Cups will be sent in solid color unless specified TC.